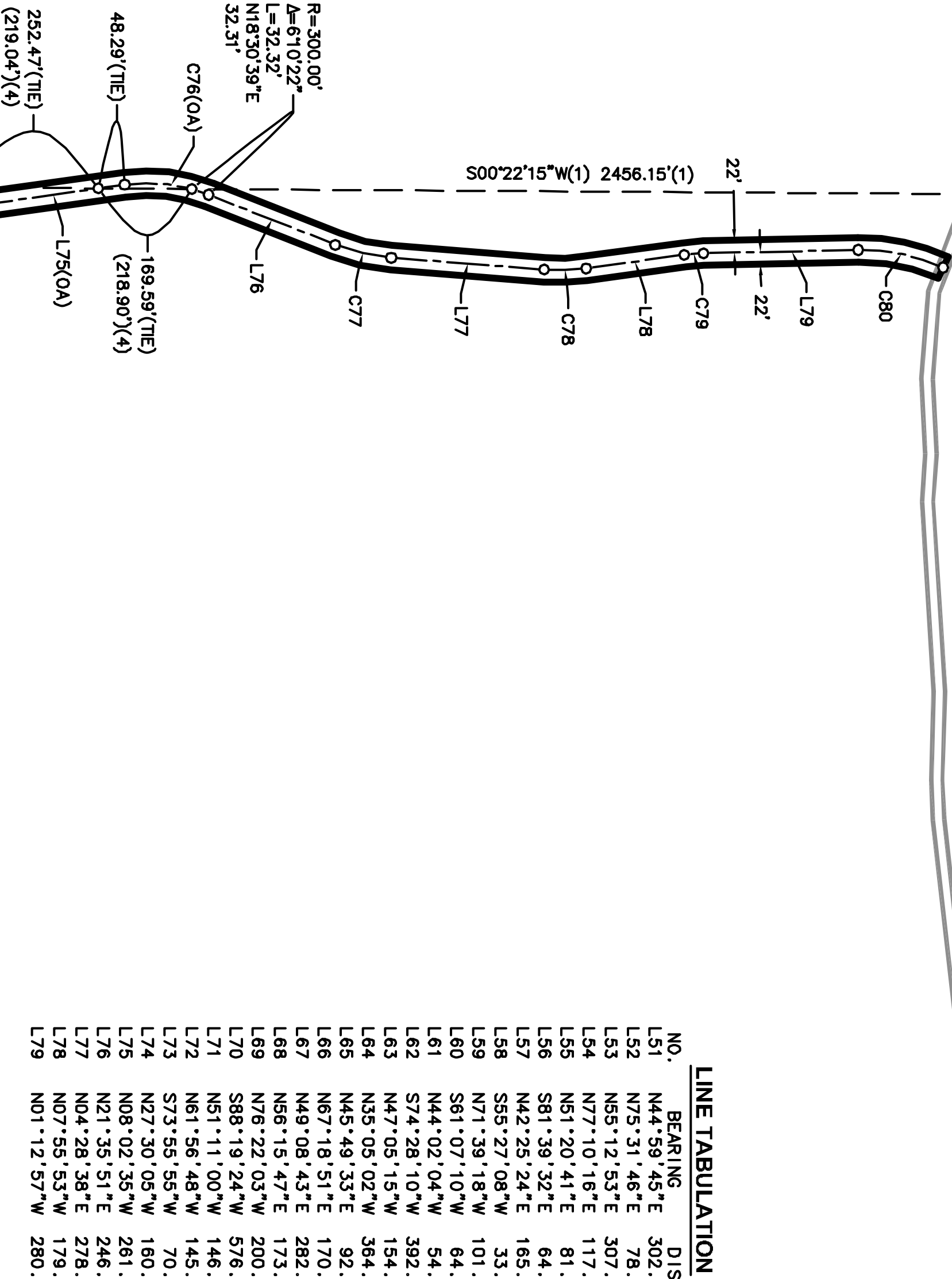


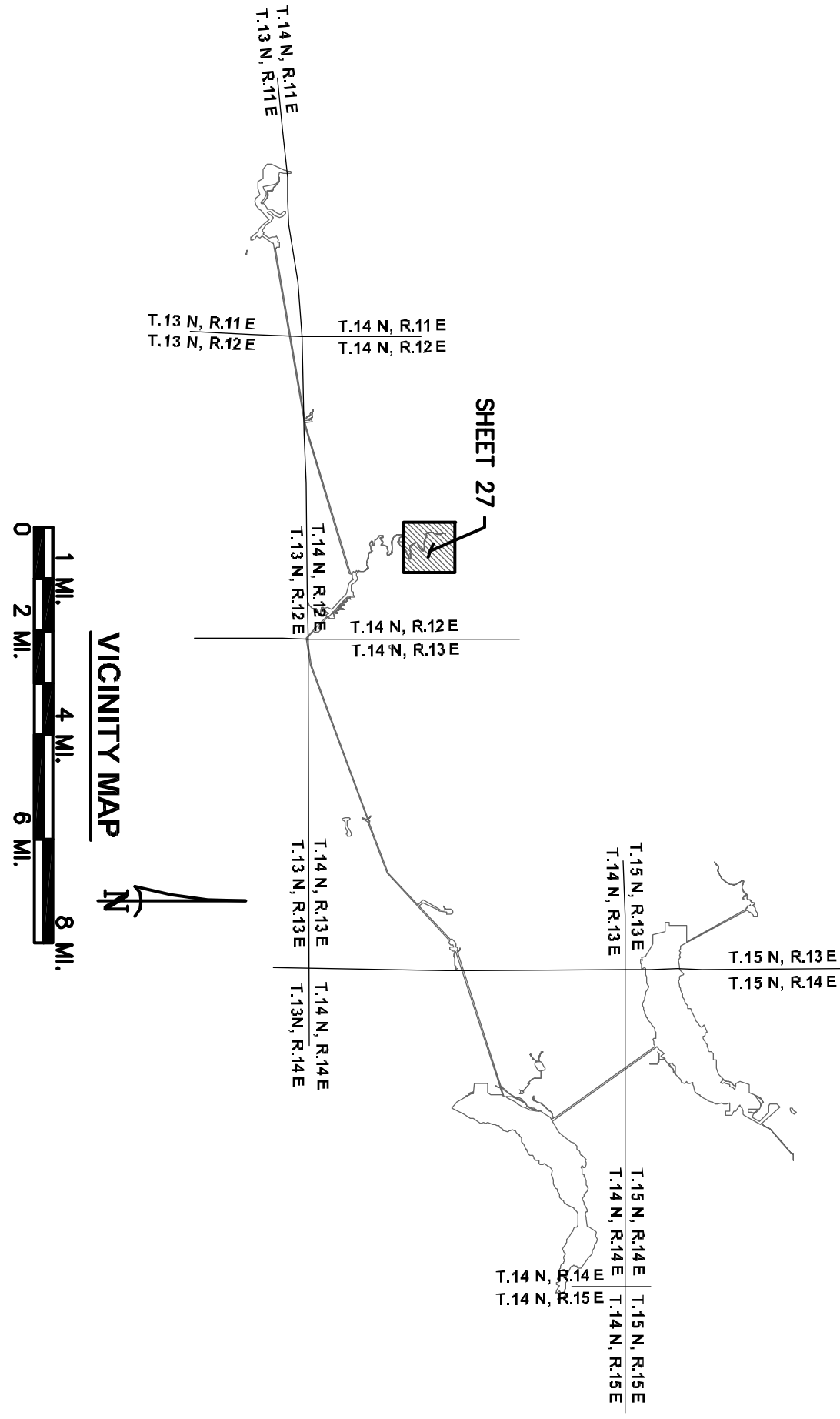
RP-3
N: 448525.24
E: 695449.67
22 23

MOSQUITO RIDGE ROAD (FR 96)



LINE TABULATION			
NO.	BEARING	DIST.	
L51	N44°59'45"E	302.58'	
L52	N45°12'53"E	307.14'	
L53	N45°12'53"E	307.14'	
L54	N45°12'53"E	307.14'	
L55	N45°12'53"E	307.14'	
L56	N45°12'53"E	307.14'	
L57	N45°12'53"E	307.14'	
L58	N45°12'53"E	307.14'	
L59	N45°12'53"E	307.14'	
L60	N45°12'53"E	307.14'	
L61	N45°12'53"E	307.14'	
L62	N45°12'53"E	307.14'	
L63	N45°12'53"E	307.14'	
L64	N45°12'53"E	307.14'	
L65	N45°12'53"E	307.14'	
L66	N45°12'53"E	307.14'	
L67	N45°12'53"E	307.14'	
L68	N45°12'53"E	307.14'	
L69	N45°12'53"E	307.14'	
L70	N45°12'53"E	307.14'	
L71	N45°12'53"E	307.14'	
L72	N45°12'53"E	307.14'	
L73	N45°12'53"E	307.14'	
L74	N45°12'53"E	307.14'	
L75	N45°12'53"E	307.14'	
L76	N45°12'53"E	307.14'	
L77	N45°12'53"E	307.14'	
L78	N45°12'53"E	307.14'	
L79	N45°12'53"E	307.14'	

CURVE TABULATION			
NO.	RADIUS	DELTA	LENGTH
C46	55.00'	170°53'01"	265.85'
C47	55.00'	170°53'01"	265.85'
C48	55.00'	170°53'01"	265.85'
C49	55.00'	170°53'01"	265.85'
C50	55.00'	170°53'01"	265.85'
C51	55.00'	170°53'01"	265.85'
C52	55.00'	170°53'01"	265.85'
C53	55.00'	170°53'01"	265.85'
C54	55.00'	170°53'01"	265.85'
C55	55.00'	170°53'01"	265.85'
C56	55.00'	170°53'01"	265.85'
C57	55.00'	170°53'01"	265.85'
C58	55.00'	170°53'01"	265.85'
C59	55.00'	170°53'01"	265.85'
C60	55.00'	170°53'01"	265.85'
C61	55.00'	170°53'01"	265.85'
C62	55.00'	170°53'01"	265.85'
C63	55.00'	170°53'01"	265.85'
C64	55.00'	170°53'01"	265.85'
C65	55.00'	170°53'01"	265.85'
C66	55.00'	170°53'01"	265.85'
C67	55.00'	170°53'01"	265.85'
C68	55.00'	170°53'01"	265.85'
C69	55.00'	170°53'01"	265.85'
C70	55.00'	170°53'01"	265.85'
C71	55.00'	170°53'01"	265.85'
C72	55.00'	170°53'01"	265.85'
C73	55.00'	170°53'01"	265.85'
C74	55.00'	170°53'01"	265.85'
C75	55.00'	170°53'01"	265.85'
C76	55.00'	170°53'01"	265.85'
C77	55.00'	170°53'01"	265.85'
C78	55.00'	170°53'01"	265.85'
C79	55.00'	170°53'01"	265.85'
C80	55.00'	170°53'01"	265.85'



- LEGEND**
- PROJECT BOUNDARY
 - RESERVOIR STORAGE STAGE
 - TUNNEL (WITH SHAFT)
 - SECTION LINE, ESTABLISHED
 - SECTION LINE, PROTRACTED
 - SUBDIVISION LINE, GOVERNMENT LAND SURVEY
 - SECTION CORNER, FOUND
 - SECTION CORNER, RECORD
 - 1/4 CORNER, RECORD
 - 1/4 CORNER, RECORD
 - COUNTY LINE
 - U.S. FOREST BOUNDARY
 - PROJECT BOUNDARY CORNER
 - OVERALL DIMENSION
 - REFERENCE POINT
 - PUBLIC LAND
 - ROAD
 - BRIDGE
 - RIVER OR PERENNIAL STREAM
 - INTERMITTENT STREAM
 - SPRING
 - POND OR LAKE, WATER LEVEL, JULY 1961
 - TREES OR BRUSH
 - STREAM FLOW GAGING STATION
 - WATER SURFACE GAGING STATION
 - CAMPGROUND
 - BUILDING
 - GOVERNMENT BENCH MARK
 - BENCH MARK RELOCATION
 - PHOTODIAGRAMETRIC PRINCIPAL POINT
 - TRIANGULATION STATION
 - FIELD ESTABLISHED ELEVATION
 - PHOTODIAGRAMETRIC ELEVATION
 - MINERAL RIGHTS ONLY
 - RECORD PER 2 ROS 78
 - RECORD PER 9 ROS 126
 - RECORD PER 13 ROS 157
 - RECORD PER 3 ROS 78

NOTES
ALL FACILITIES AND FEATURES SHOWN HERE ON ARE PER DATA COLLECTED BY OTHERS.

REFERENCE POINT COORDINATES
NAD83 CALIFORNIA STATE PLANE COORDINATE SYSTEM ZONE II (CCS83, ZONE 2):
U.S. SURVEY FEET

SURVEYORS STATEMENT
I, ANDREGG, CERTIFY THAT I HAVE PERSONALLY SUPERVISED THE SURVEY OF THE PROJECT LANDS, THAT THE PROJECT BOUNDARY LINE IS SHOWN ON THIS EXHIBIT 'G' IS DEVELOPED WITH REASONABLE ACCURACIES AS REQUIRED IN 18CPR4.39 & 18CPR4.41 TO THE GEOGRAPHIC LOCATION, SEE CONTROL SCHEME FOR DETAILS OF THE BOUNDARY DELINEATION AND DATA ACQUISITION.

ANDREGG, GEOMATICS

PROFESSIONAL LAND SURVEYOR
ANDREGG, GEOMATICS
LICENSE NO. 154751
EXPIRES 9/20/11

DATE: 2/23/2011
BY: 22 23
E: 695449.67

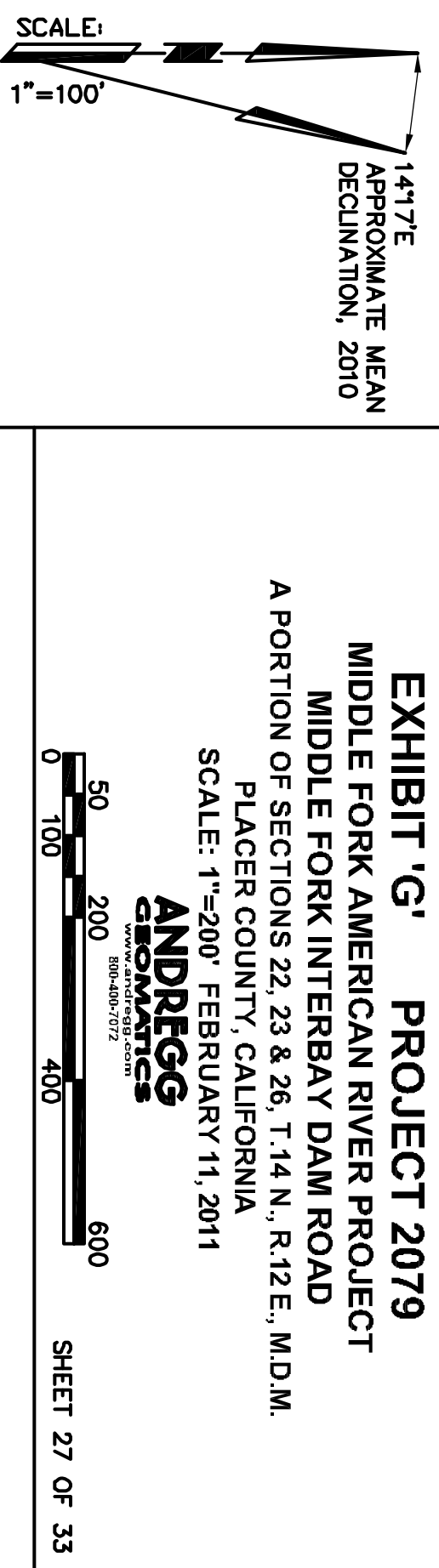
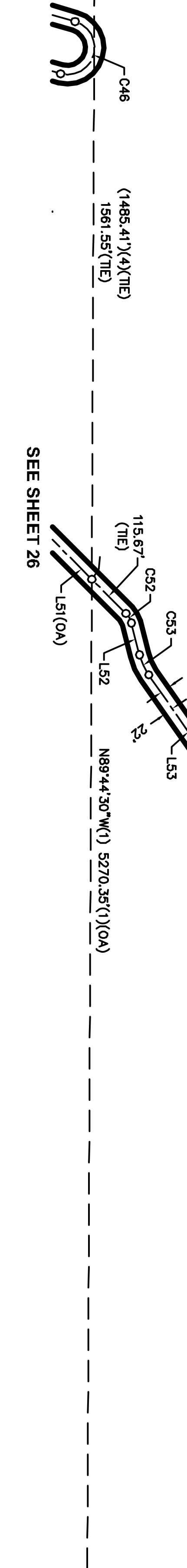


EXHIBIT 'G' PROJECT 2079
MIDDLE FORK AMERICAN RIVER PROJECT
MIDDLE FORK INTERBAY DAM ROAD
A PORTION OF SECTIONS 22, 23 & 26, T.14 N., R.12 E., M.1 M.
PLACER COUNTY, CALIFORNIA
SCALE: 1"=200' FEBRUARY 11, 2011
ANDREGG, GEOMATICS
SHEET 27 OF 33